

ATS Monitor

User's Manual

Management Software for ATS

Table of Contents

1.	ATS Monitor Overview	2
2.	ATS Monitor Install and Uninstall	2
2.1.	System Requirement	2
2.2.	Software Install	2
2.3.	Software Uninstall	8
3.	Tray Application	8
3.1.	Startup	8
3.2.	Open Monitor	9
3.3.	SNMP Manager	9
3.4.	Message Board	10
3.5.	Exit	10
4.	ATS Monitor GUI Interface	10
4.1.	System	12
4.1.1.	Basic	12
4.1.2.	Password	13
4.1.3.	E-mail	14
4.1.4.	SMS	15
4.1.5.	Event action	16
4.1.6.	EMD manager	17
4.1.7.	Close	20
4.2.	ATS	20
4.2.1.	Rating information	20
4.2.2.	Parameters setting	20
4.3.	Log	21
4.3.1.	History datas	21
4.3.2.	History events	22
4.3.3.	EMD logs	23
4.4.	Log in and Log out	24
4.5.	Help	25

1. ATS Monitor Overview

ATS Monitor is specialized monitoring software that can check the most current working status of ATS, the associated data, and past history.

2. ATS Monitor Install and Uninstall

2.1. System Requirement

- 512 MB physical memory at least (1 GB is recommended)
- 1GB hard disk space at least
- Administrator authority is required
- More than 32-bit colors and 1280 x 800 or above resolution display is recommended
- An available communication port is needed
- Platforms supported by software are listed below:
 - Windows 2000
 - Windows XP/2003/Vista/2008 (32-bit & x64-bit)
 - Windows 7(32-bit & x64-bit)

2.2. Software Install

Step 1 After clicking install, it will display the installation in process. Refer to the diagram 2-1.

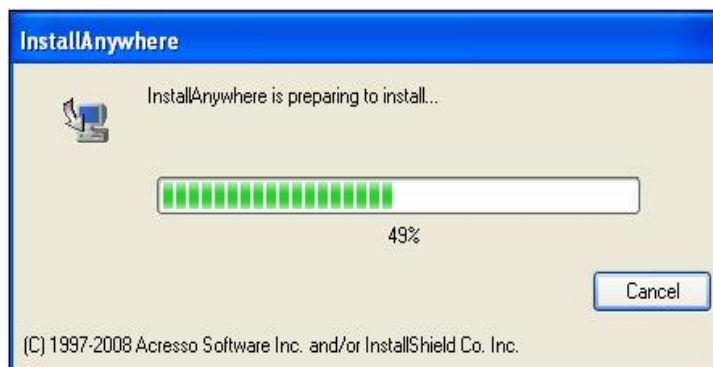


Diagram 2-1

Step 2 Choose wanted language and click "OK" as diagram 2-2.

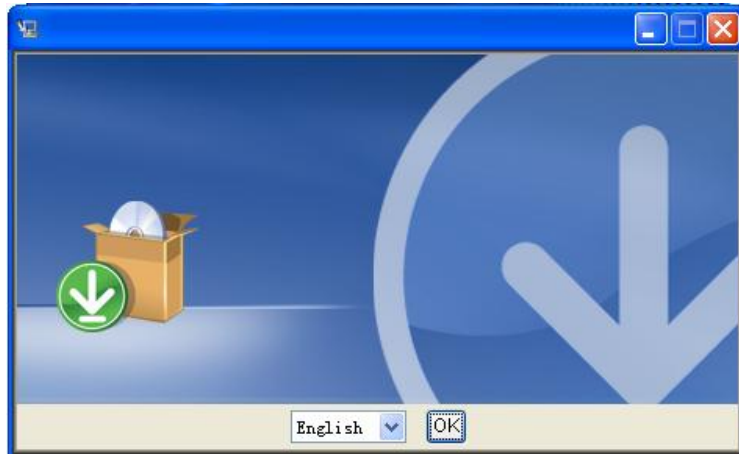


Diagram 2-2

Step 3 Click "Next" to proceed to the next screen as Diagram 2-3.

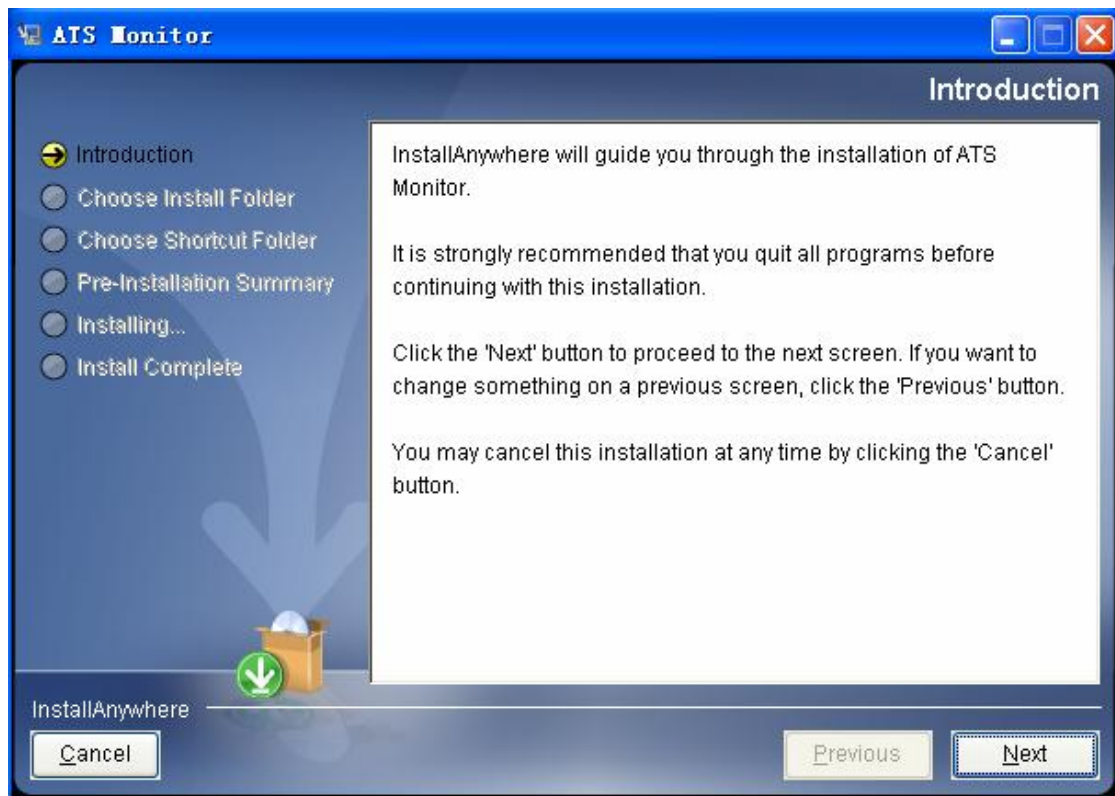


Diagram 2-3

Step 4 Click "Choose" button to change the default folder. After choosing the installed folder, click "Next" button. Refer to the following diagram 2-4.

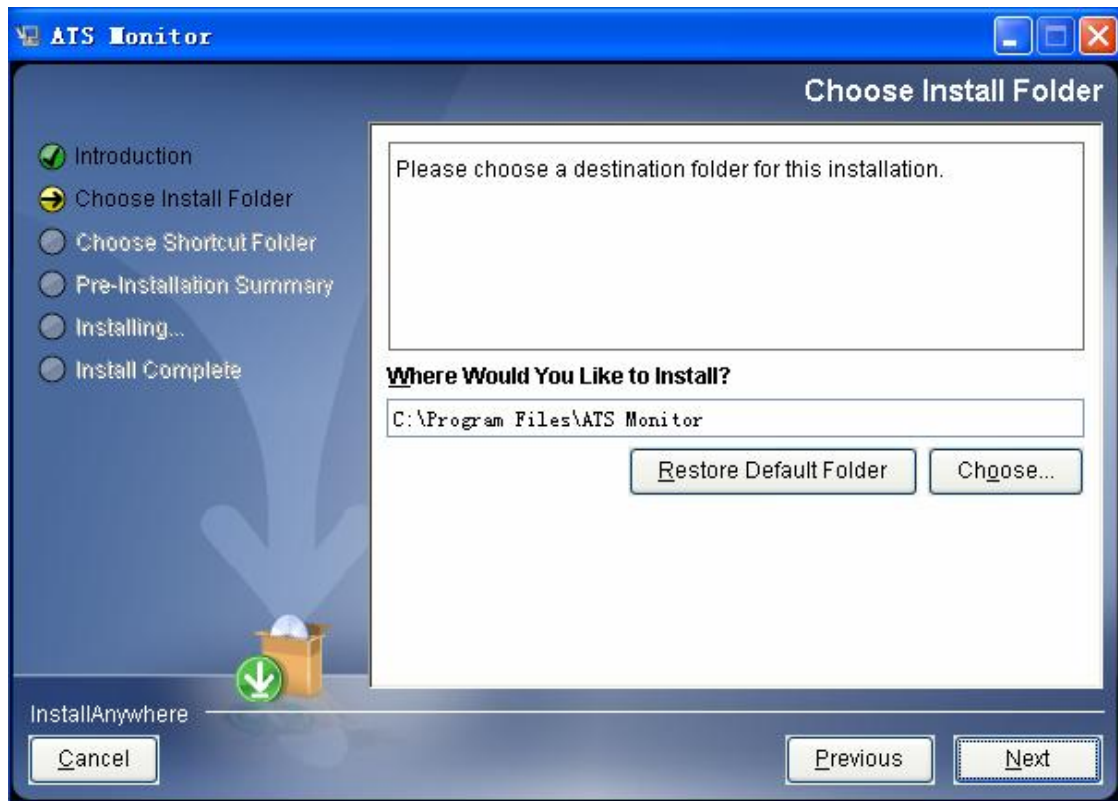


Diagram 2-4

Step 5 Choose the shortcut folder and click “Next” button. Refer to the following diagram 2-5.

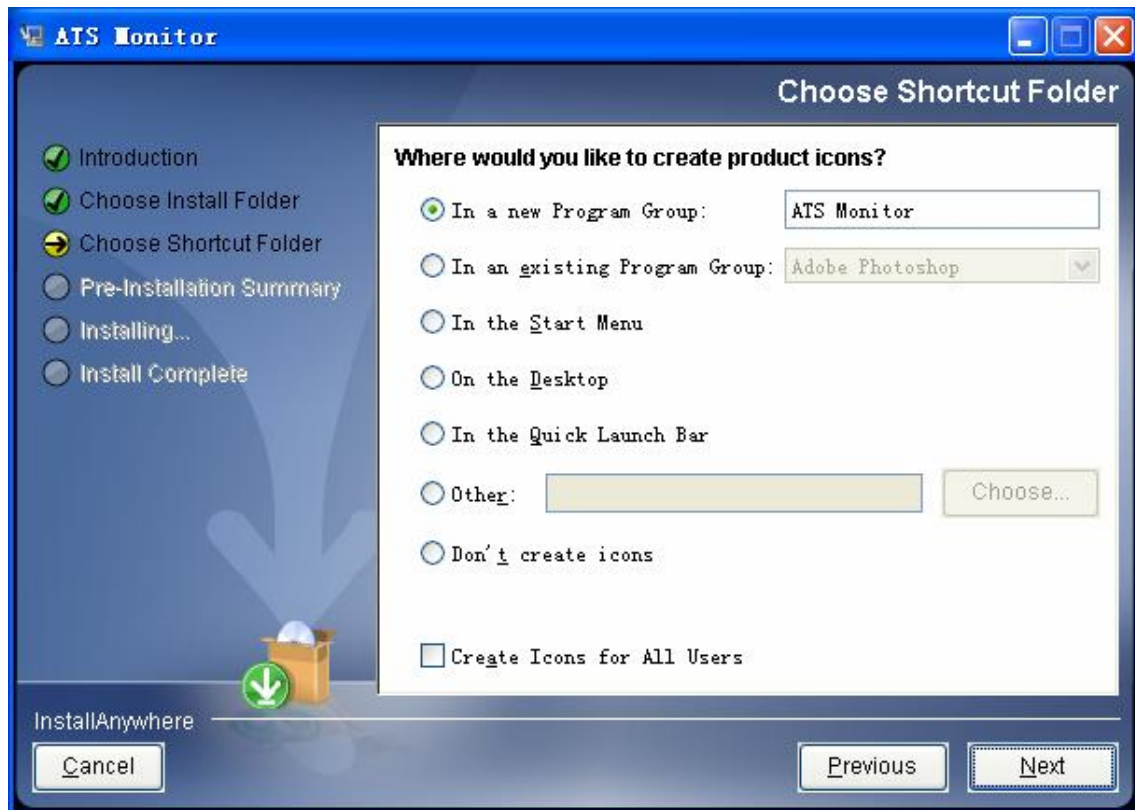


Diagram 2-5

Step 6 It will display the software summary before installation. Click “Install” button to start the installation and refer to Diagram 2-6.

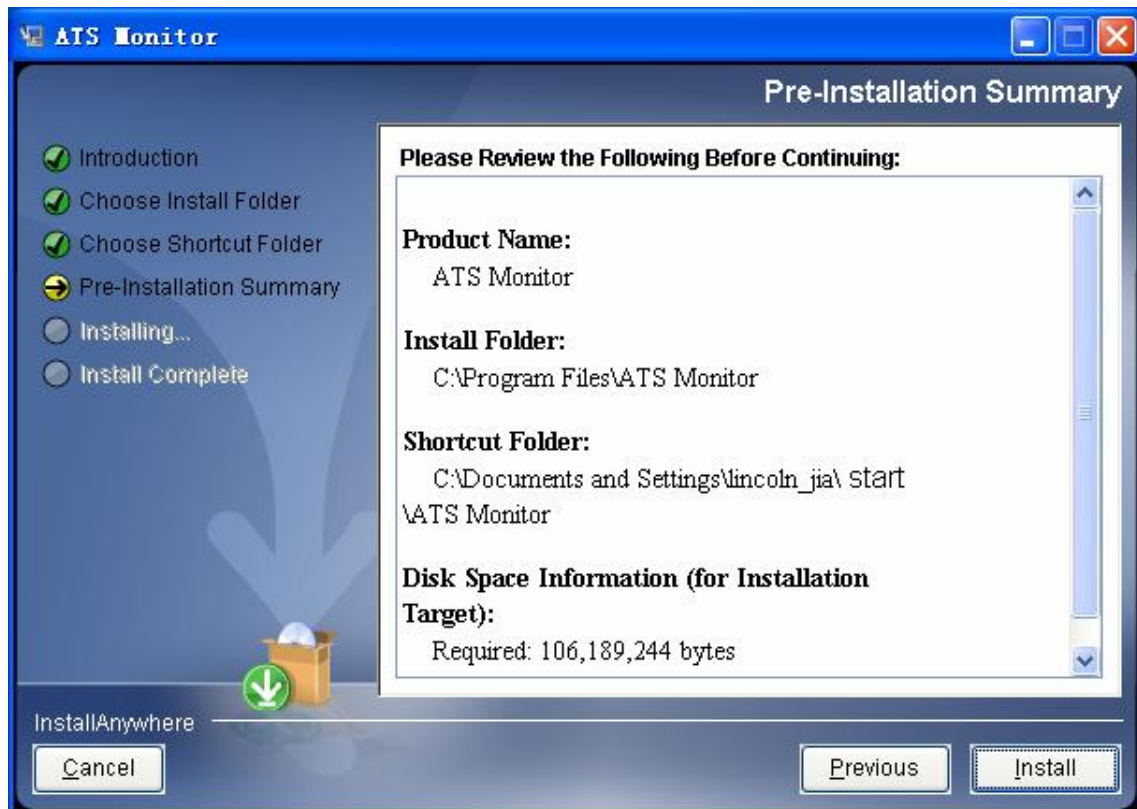


Diagram 2-6

Step 7 Installing, refer to Diagram 2-7.

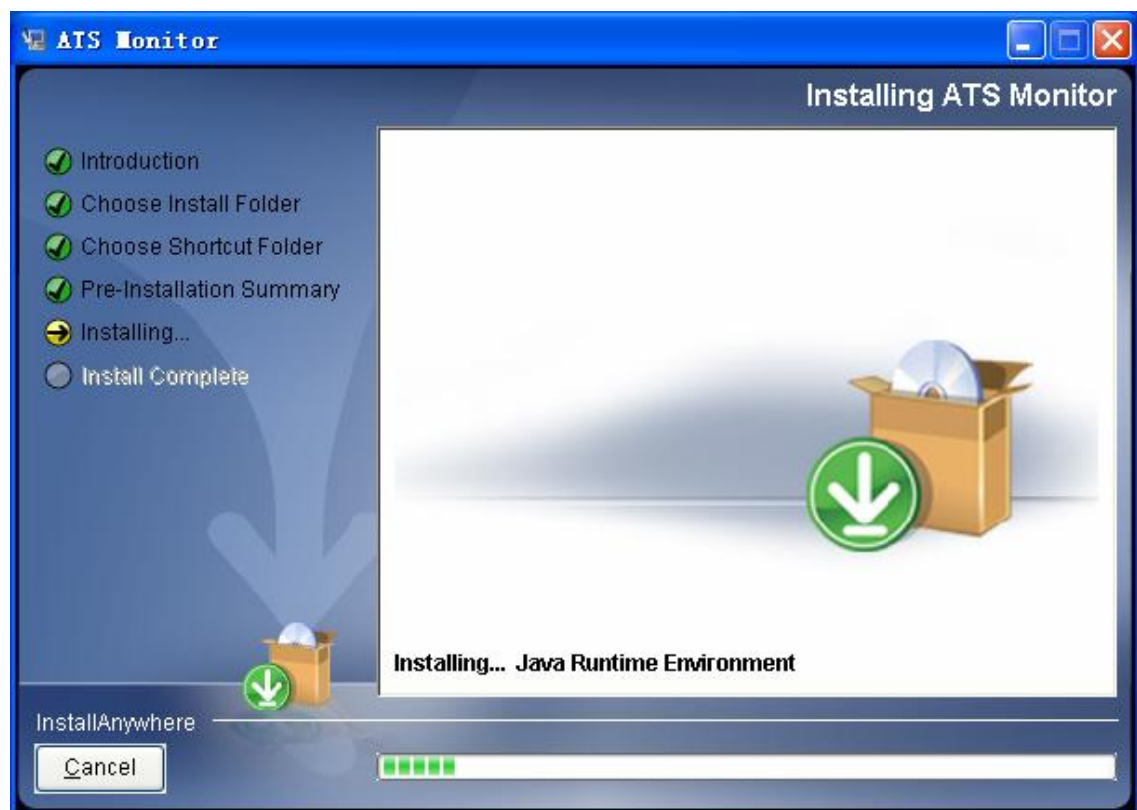


Diagram 2-7

Step 8 Click "Done" button to confirm the installation completely. Refer to Diagram 2-8.

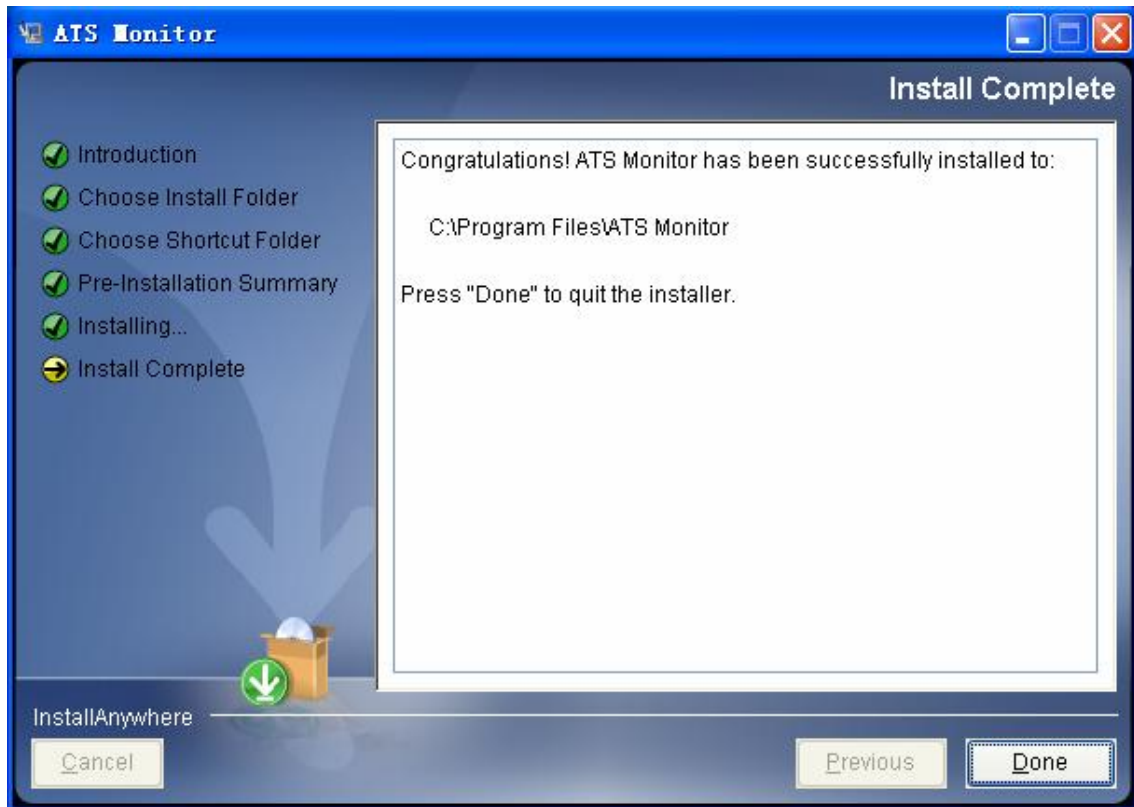


Diagram 2-8

2.3. Software Uninstall

Please choose Start >> All Programs >> ATS Monitor >> Uninstall ATS Monitor. Then follow the on-screen instruction to uninstall the software.

Note: Before uninstall software, you must stop all software programs first and then log in as "Administrator"! Otherwise it can't be uninstalled completely.

3. Tray Application

3.1. Startup

The Installer will leave a shortcut icon called "ATS Monitor" on your desktop. Refer to Diagram 3-1. Simply double click the shortcut. Then it will start the software and display a service icon located in tray. It will pop up function menu by clicking right button of the mouse. Refer to below diagram 3-2.



Diagram 3-1



Diagram 3-2

3.2. Open Monitor

Refer to below diagram 3-3. With running the program, ATS is now in monitoring status, with clicking the 'Open Monitor' menu with inspections on current working conditions.

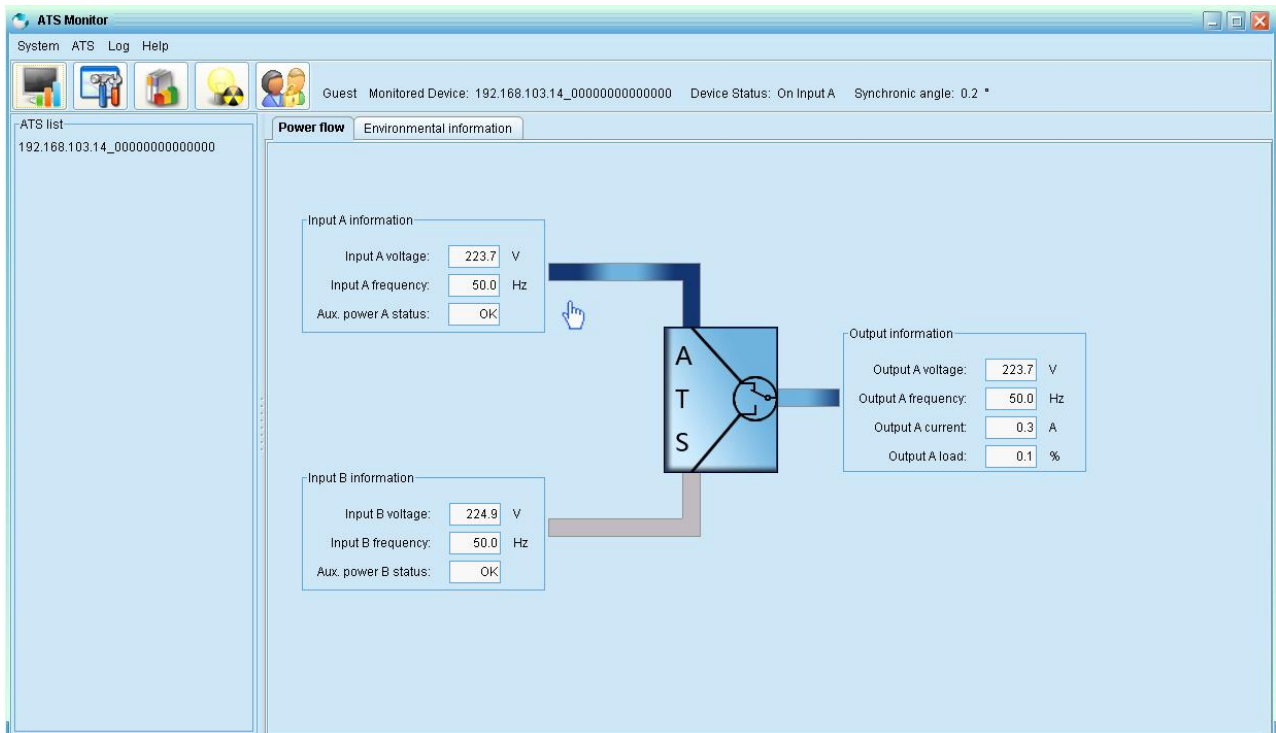


Diagram 3-3

3.3. SNMP Manager

Click the "SNMP Manager" to access the SNMP management tool. For details, please refer to "SNMP Manager User manual".

3.4. Message Board

A flashing tray suggests a coming event, which can be checked by click once the item.

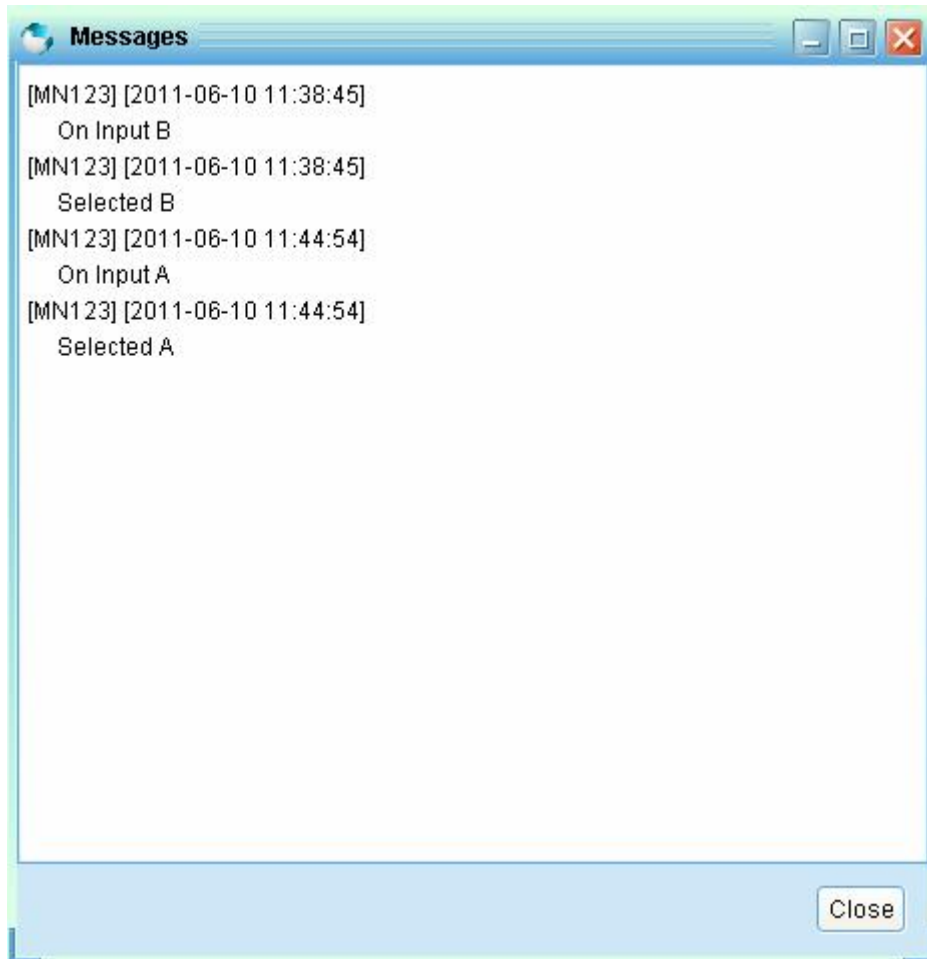


Diagram 3-4

3.5. Exit

Click "Exit" to exist application.

4. ATS Monitor GUI Interface

ATS Monitor GUI Interface has five sections as marked in the illustration below diagram

4-1:

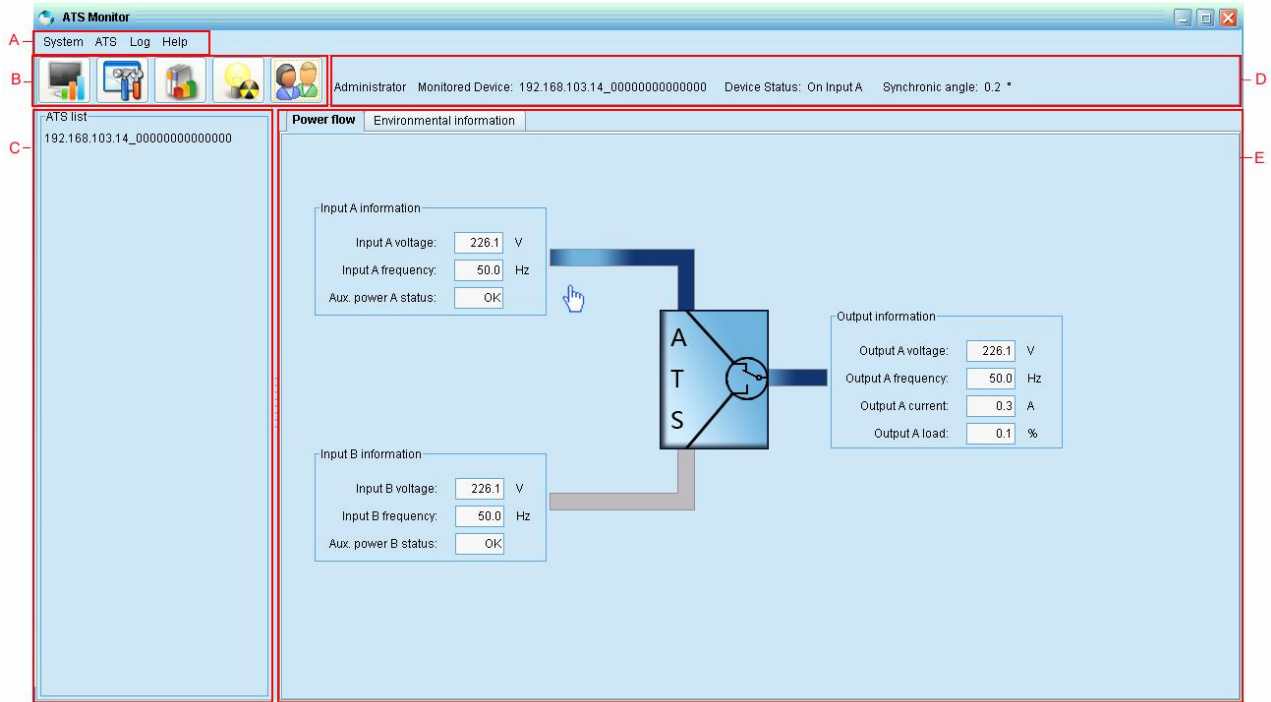


Diagram 4-1

A. Function Menu offers complete tool-set for navigating and setting the GUI.

B. Shortcut Menu provides short cuts to more commonly used functions.

C. ATS lists all ATS equipments which connect to current PC.

D. Current Monitoring Information displays monitored ATS ID, status, and synchronic angle.

E. Main Area actually shows the most current monitoring information.

- Input A information includes input B voltage and input B frequency.
- Input A information includes input B voltage and input B frequency.
- Output information includes output B voltage and output B frequency.
- Environmental information includes temperature and humidity, below diagram 4-2.

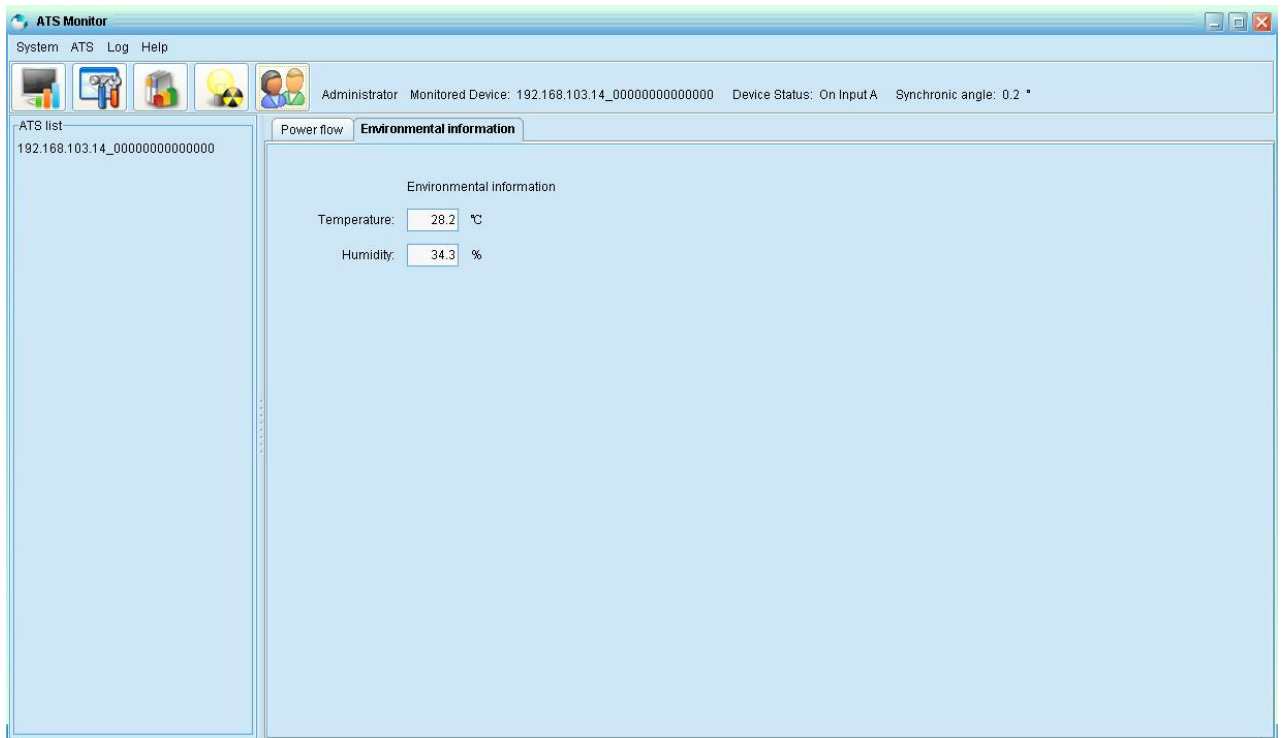


Diagram 4-2

Note: it will have Output A information once the input channel is A. and output B information with input on channel B.

4.1. System

4.1.1. Basic

Select System >> Basic. This page is to set basic display. Refer to Diagram 4-3.

Page refresh interval can be chosen to refresh the current page.

Record interval can control the interval that records the past history.

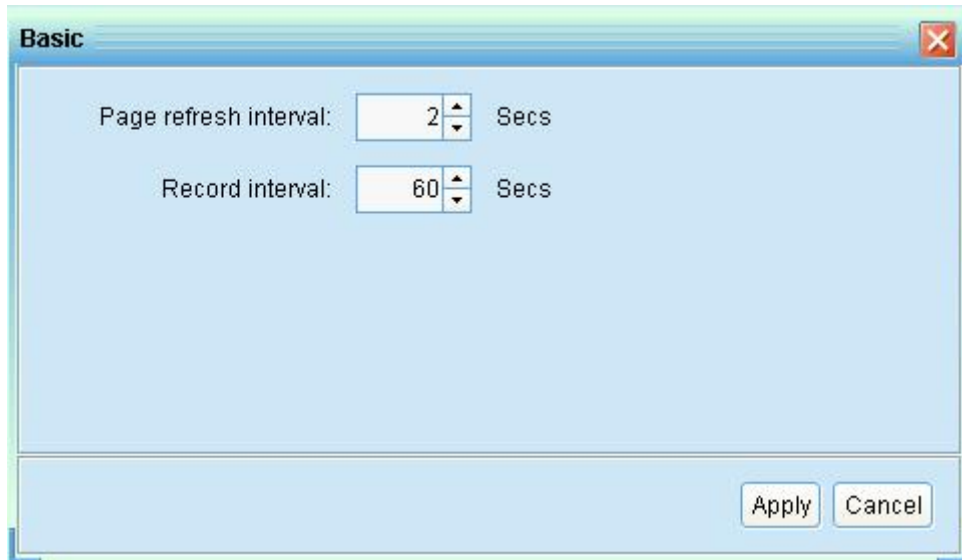


Diagram 4-3

4.1.2. Password

It's password configuration for administrator only. Before operating and configuring the software, please login first and modify the password. The default password is "administrator" at first log in. Users can only browse ATS status and information as Guest status without login as an Administrator. Guest can not control or executive any setting.

Step 1 Select System>>Password. Refer to Diagram 4-4.

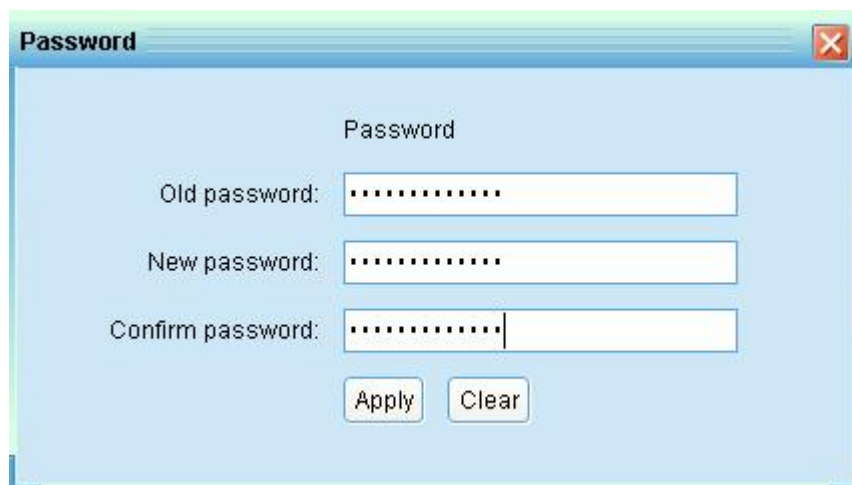


Diagram 4-4

Step 2 Enter old password, new password, and retype new password in confirm password column to modify password for administrator. (The password should be at least 6 digits) Then click "Apply" button to successfully modify password

for administrator.

NOTE1: Simply click "Login" button on the top right corner to log in the software.

NOTE2: If password is forgotten, it's necessary to re-install the software.

4.1.3. E-mail

This feature enables the configuration to send alarm mail by SMTP server. For the event receiving list, please configure in "Event Action" column (refer to section 4.1.5).

To use this function, the e-mail service must be correct configured on the computer. All values in this function page are default empty. This action can't be executed without the SMTP information, e-mail account, and password. Besides, the sender account should be allowed for SMTP/POP3 forwarding.

Step 1: Select System >> E-mail. This page is to set E-mail display. Refer to Diagram 4-5.

Step 2: Enter SMTP server, SMTP port, Send from E-mail address, User name and password. Click checkbox of password authentication needed for password verify.

NOTE: If using Exchange Server for mailbox system, it's required to configure Exchange server domain name in SMTP sever and select "Exchange server", then click "Apply" button.

Step 3: Enter correct e-mail accounts in E-mail column. Then click "Add" to add into receivers list. To delete e-mail account, simply select accounts from Receivers list and click "Delete" button.

Step 4: Click "Apply" to save all changes. The "Test" button can be used to send a test e-mail to all receivers to confirm correct operation. When the test e-mails are successfully sent to specific recipients, it will pop up a successful message on operated PC. Otherwise, it will pop up a failure dialog to indicate there is an error for parameter setting.

E-mail

SMTP Server Setting

SMTP Server: Port:

Exchange Server

Send from:

User name:

Password Authentication needed

Password:

Receivers list:

Note: Click "Test" button to check if the transmission is successfully

Diagram 4-5

4.1.4. SMS

It's for entering SMS receiver list. In the event of an alarm condition occurring, a message about ATS status will be sent to the specified users via mobile phone. For the event receiving list, please configure in "Event Action" column (refer to section 4-1-5).

Step 1: Select System >> SMS. This page is to set SMS display. Refer to Diagram 4-6.

Step 2: Select communication port and baud rate.

Step 3: Enter mobile phone numbers in "Phone no." column and click "Add" button to add phone no. in Receivers List. To delete numbers, simply select phone no. from "Receivers list" and click "Delete".

Step 4: Click "Apply" button to save all changes. The "Test" button can be used to send test SMS to confirm the correct operation. If all parameters are set up correctly, system will send a test message to all receivers and pop up a successful message. Otherwise, it will pop up a failure dialog to indicate there is an error for parameter setting.

NOTE: It's required to plug-in GSM Modem if sending SMS to mobile phone.

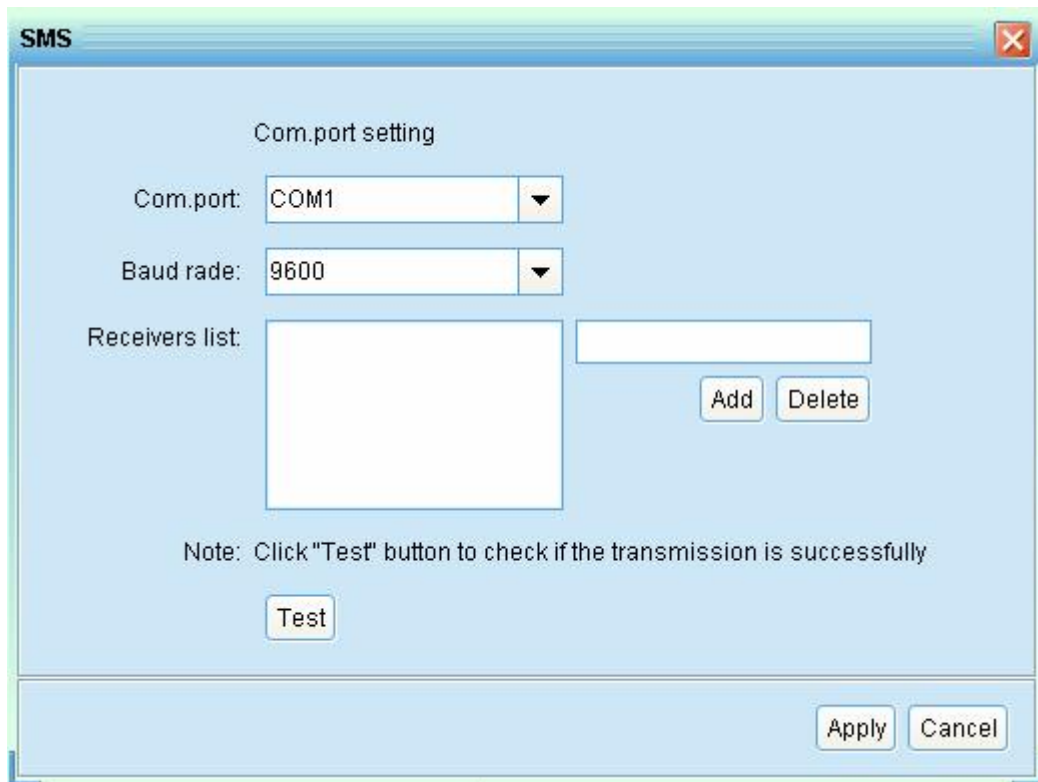


Diagram 4-6

4.1.5. Event action

It's to configure response actions for ATS events. Software provides six response actions after events occur.

1. Event record: It will record event to data log in software after events occur. This function is default selected.

2. Warning dialog: It will pop up a message dialog around the software orange plug icon in taskbar after events occur. This function is default selected.

3. E-mail: It will send the event e-mail to assigned e-mail accounts after events occur.

4. SMS: It will send the event message to specific mobile phone numbers after

events occur.

Step 1: Select System >> Event action. This page is to set Event action display. Refer to Diagram 4-7.

Step 2: Select a specific event from "Event List" and then action method page will be active on the right-hand column.

Step 3: Select desired action methods by clicking checkbox.

Step 4: Click "Apply" button to save all configurations.

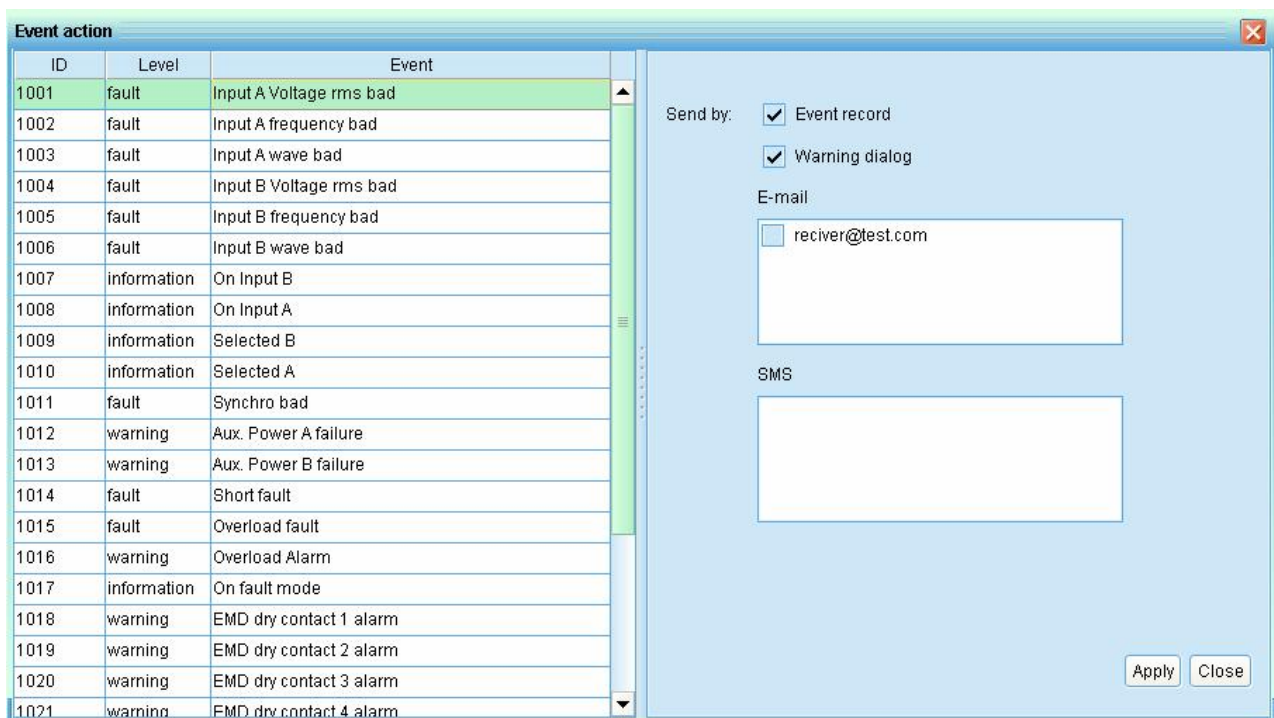


Diagram 4-7

4.1.6. EMD manager

EMD manager is used to manage EMD device. Users can define events and set message texts for each event. It also can setup warning points for temperature, humidity of EMD device.

- **Dry contact event:** Users can define events and set event level. After adding event successfully, users can configure and set alarm.

Text Message: The description of the dry contact event.

Default dry Contact: Define dry contact no. for sending events. The selections are None, and from 1 to 4. If selecting None, it means this event is defined as special event. Then, users can assign specific EMD to receive in “Dry contact configuration” section. If selecting any value from 1 to 4, all EMD devices (except for specified EMD) will receive this event message. Refer to Diagram 4-8.

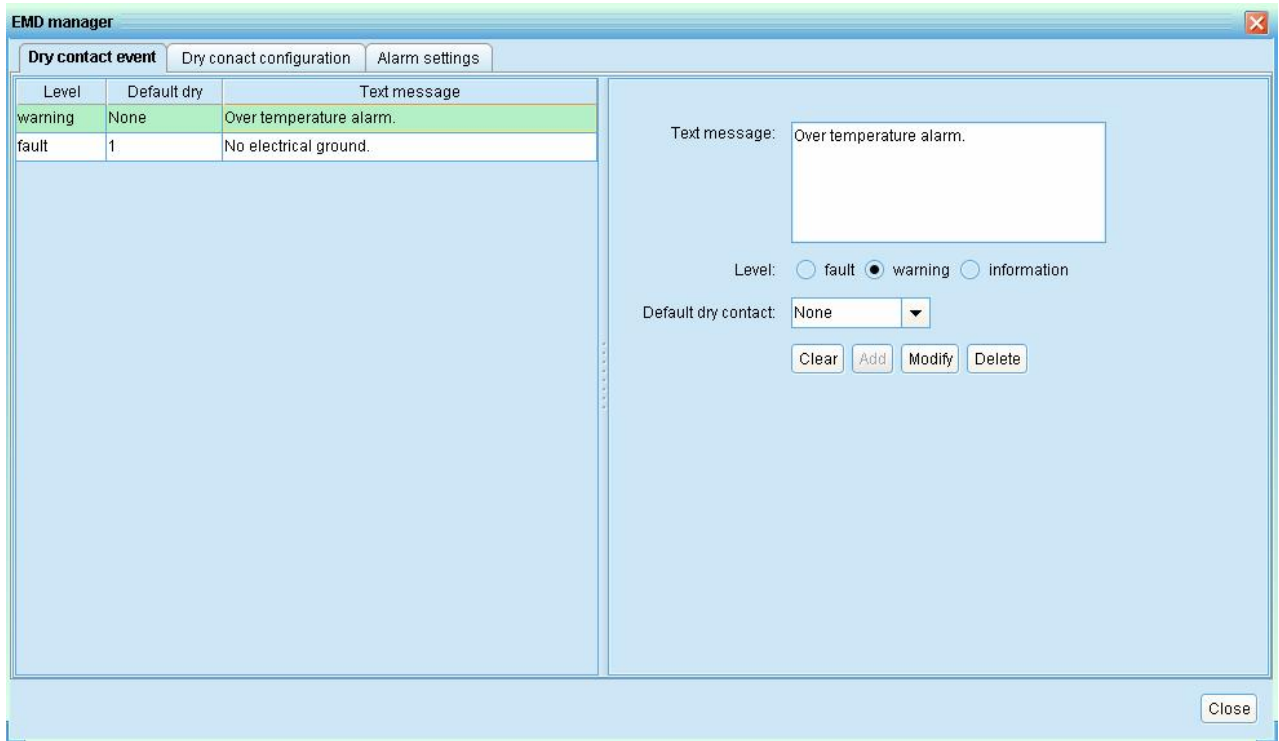


Diagram 4-8

- **Dry contact configuration**

Users can define event lists through dry contact in EMD. If any defined events occur to the device, it will send alarm or notifications via software. Refer to Diagram 4-9.

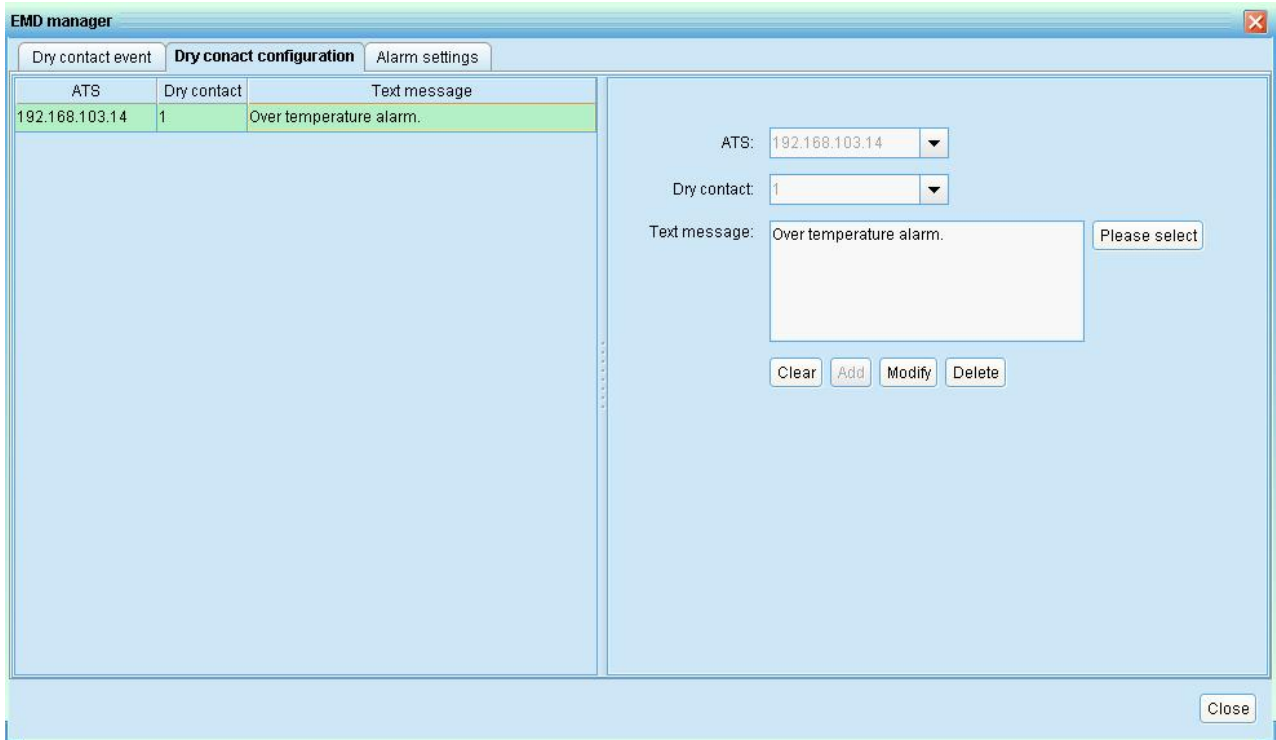


Diagram 4-9

- **Alarm Settings**

Setup alarm range for EMD temperature or humidity. If any measured figures are detected as out of setting range, then it will send alarm message. Refer to Diagram 4-10.

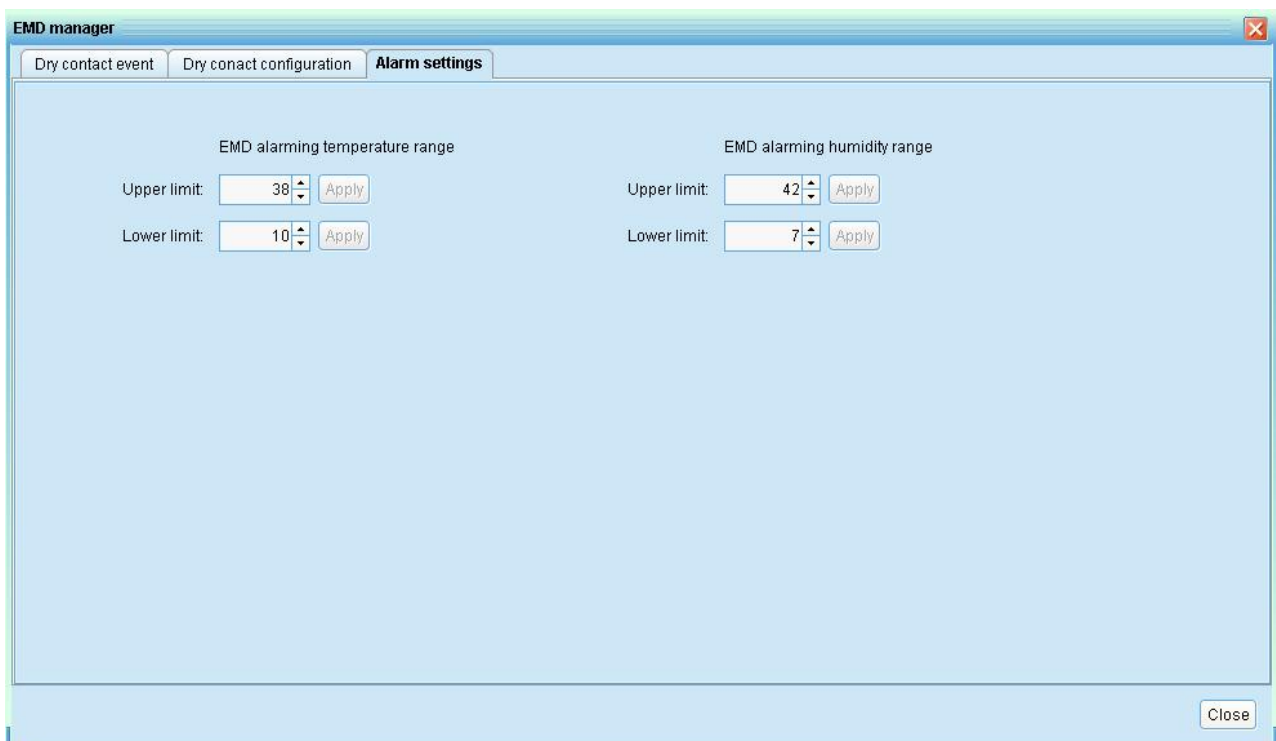


Diagram 4-10

4.1.7. Close

Select System >> Close, Can close the current monitoring page.

4.2. ATS

4.2.1. Rating information

Select ATS >> Rating information. Refer to Diagram 4-11. The rated values that on display which includes: CPU firmware version, Rating output voltage, Rating output current, Rating output frequency.

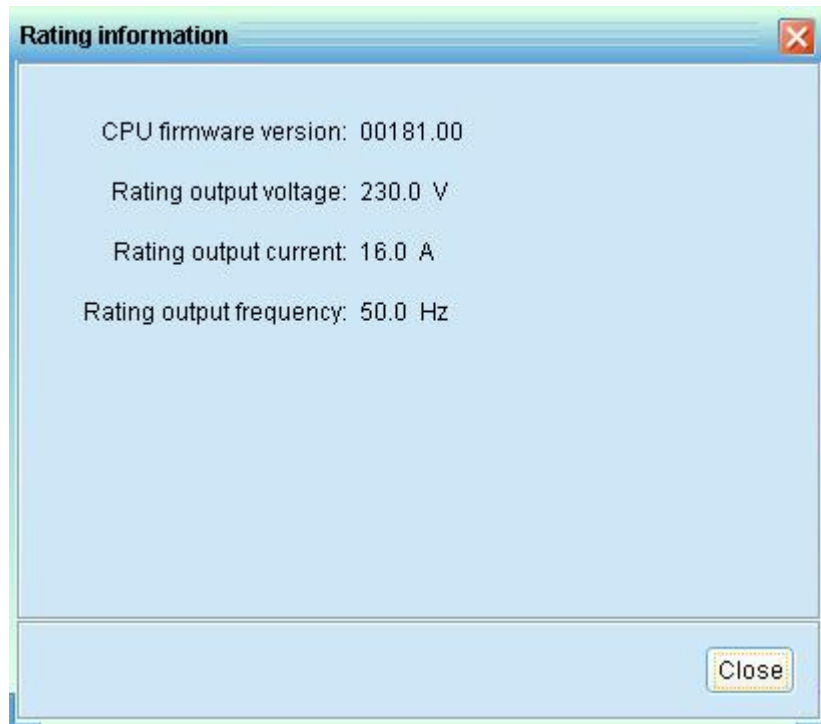


Diagram 4-11

4.2.2. Parameters setting

Select ATS >> Parameters setting. Refer to Diagram 4-12.

Step 1: Change the numbers by clicking up-down arrows or modify the numbers directly in the number column.

Step 2: Click "Apply" button to save the settings.

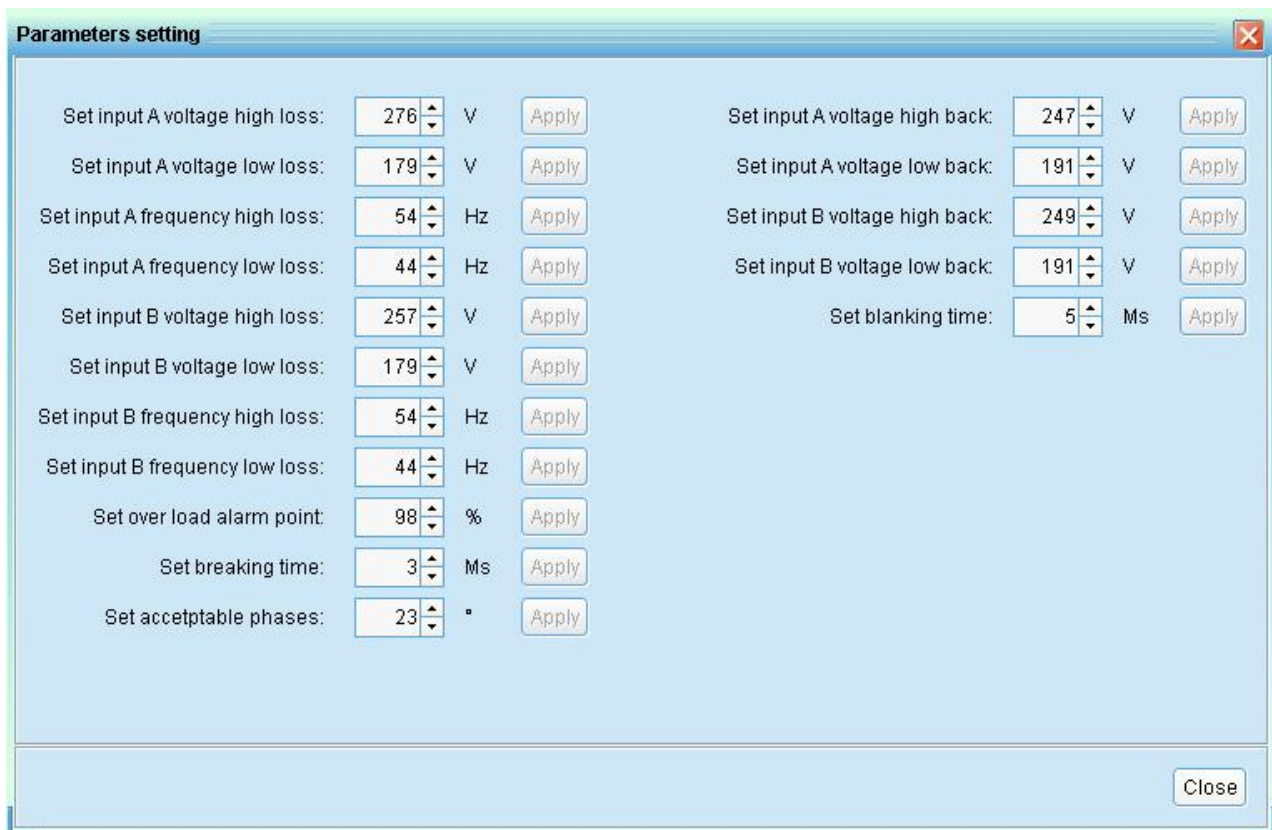


Diagram 4-12

4.3. Log

4.3.1. History datas

In the window of data, it shows ATS power data in figures during selected period time.

Step 1: Select Log >> History datas. Refer to Diagram 4-13.

Step 2: Select ATS from device list. Users still can retrieve old data saved in the software even though the ATS is no longer connected to local system.

Step 3: Select time period by clicking calendar icon. Then click "Query" button to get list of all history events during selected period time.

Step 4: Save as and clear function keys

- **"Save as":** Click "Export" button to save listed table to local PC in .PDF file.
- **"Clear":** To delete all history events on the listed table.

History events

Device: 00000000000000 Select date: 2011-11-25 -- 2011-11-25 Query

ID	Level	Time	Event name
1010	information	2011-11-25 16:43:32	Selected A
1008	information	2011-11-25 16:43:32	On Input A
1028	information	2011-11-25 16:43:11	Communication restore.
1009	information	2011-11-25 16:43:11	Selected B
1007	information	2011-11-25 16:43:11	On Input B
1025	warning	2011-11-25 16:41:18	EMD humidity becomes lower than the lower limit
1023	warning	2011-11-25 16:41:18	EMD temperature becomes lower than the lower limit
1009	information	2011-11-25 16:24:08	Selected B
1007	information	2011-11-25 16:24:08	On Input B
1010	information	2011-11-25 16:23:52	Selected A
1008	information	2011-11-25 16:23:52	On Input A
1009	information	2011-11-25 16:14:22	Selected B
1007	information	2011-11-25 16:14:22	On Input B
1028	information	2011-11-25 16:14:22	Communication restore.
1025	warning	2011-11-25 15:41:06	EMD humidity becomes lower than the lower limit
1023	warning	2011-11-25 15:41:06	EMD temperature becomes lower than the lower limit
1009	information	2011-11-25 15:19:28	Selected B
1028	information	2011-11-25 15:19:28	Communication restore.

Save as Clear Close

Diagram 4-14

4.3.3. EMD logs

In the EMD logs window, it shows the environment data EMD equipment monitor in figures during selected period time. Software also offers delete functions.

Step 1 Select Log >> EMD logs. Refer to Diagram 4-15.

EMD logs

Device: 192.168.103.14 Select date: 2011-11-25 -- 2011-11-25 Query

Time	Temperature	Humidity
2011-11-25 13:58:22	26.9	37.8
2011-11-25 13:59:22	26.7	37.8
2011-11-25 14:00:22	27.0	37.0
2011-11-25 14:01:22	27.1	36.4
2011-11-25 14:02:22	27.7	36.3
2011-11-25 14:03:22	27.5	36.0
2011-11-25 14:04:22	27.8	35.7
2011-11-25 14:05:22	27.7	35.4
2011-11-25 14:06:23	27.8	35.3
2011-11-25 14:07:23	27.8	34.9
2011-11-25 14:08:23	28.0	34.9
2011-11-25 14:09:23	27.9	35.0
2011-11-25 14:10:23	28.2	34.7
2011-11-25 14:11:23	28.1	34.5
2011-11-25 14:12:24	28.1	34.7
2011-11-25 14:13:24	28.4	35.0
2011-11-25 14:14:24	28.4	34.5
2011-11-25 14:15:24	28.2	34.4


Save as Clear Close


Diagram 4-15


Step 2 Select device and select the starting time and ending time by clicking calendar icon. Then click "Browse" button to get the data table.

- **"Save as"**: Click "Export" button to save listed table to local PC in .PDF file.
- **"Clear"**: To delete all history events on the listed table.

4.4. Log in and Log out

Icon  to display users don't log in ATS

Icon  to display users has logged in ATS

Click icon  and enter password to login the software. The default password is "administrator". Refer to Diagram 4-16.

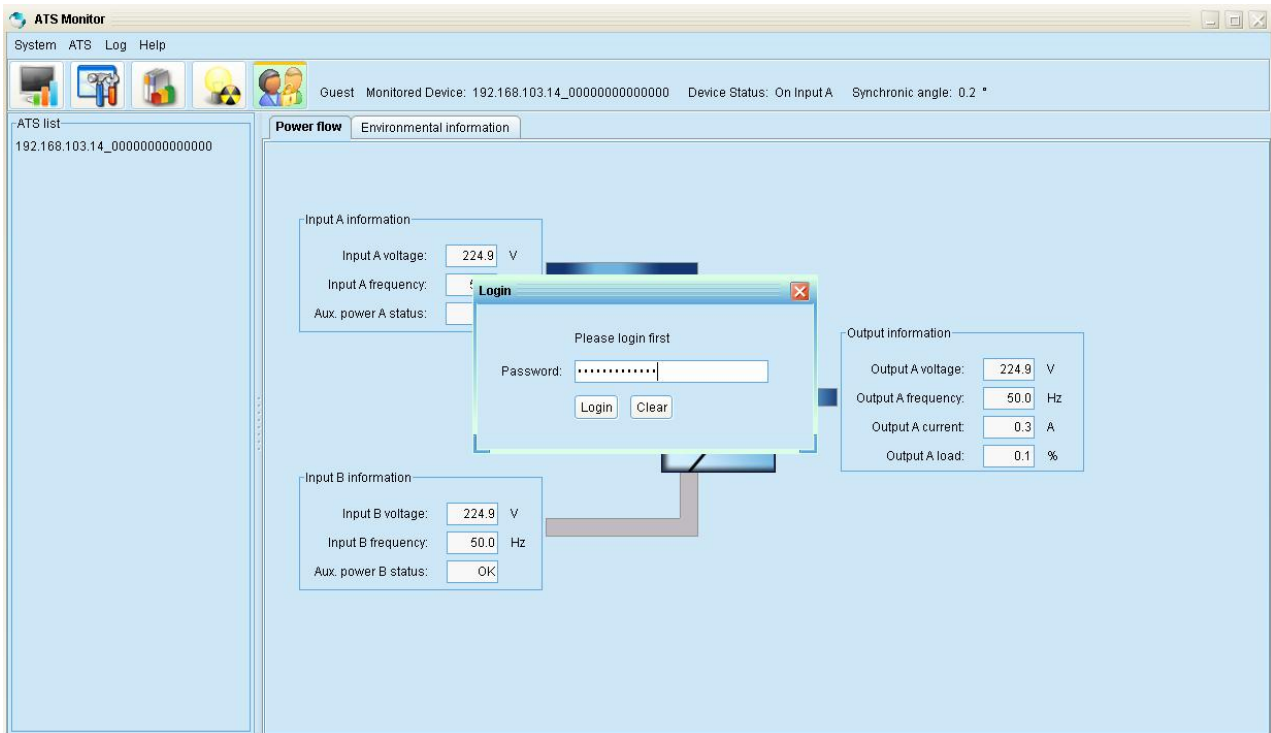



Diagram 4-16

Click icon  to log out. Refer to Diagram 4-17.

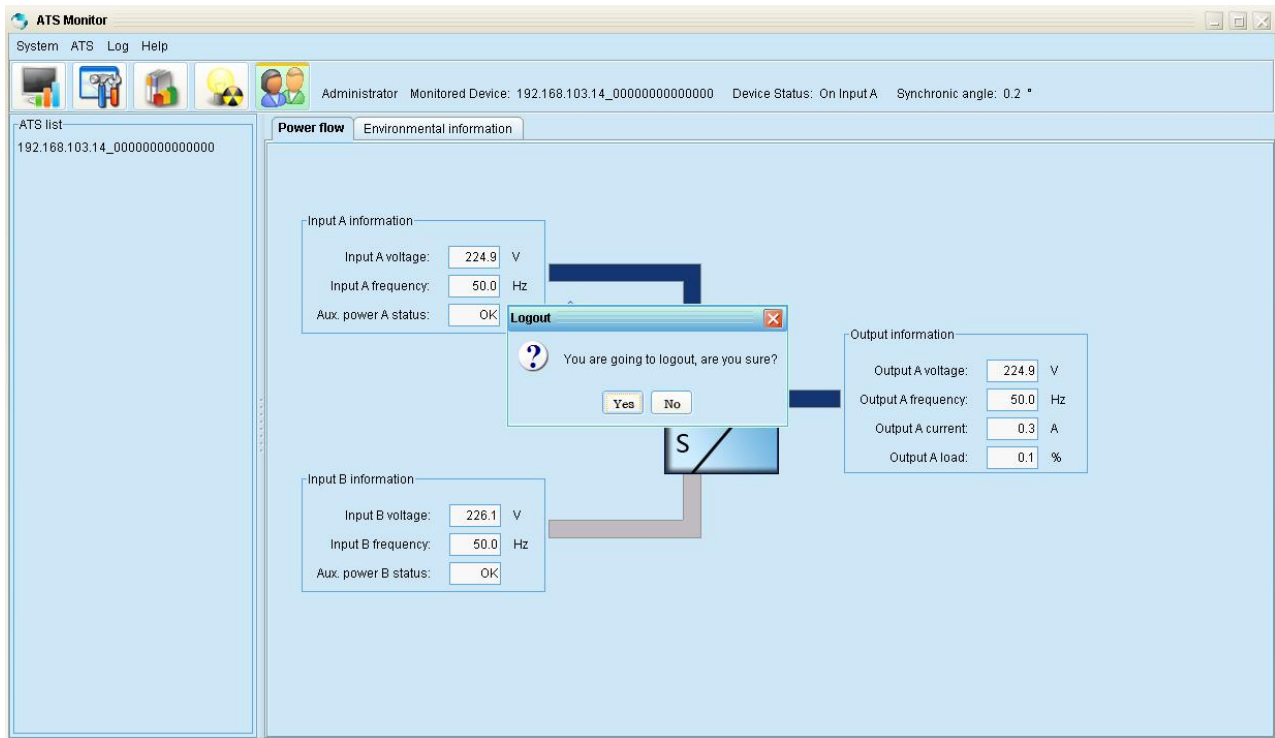


Diagram 4-17

4.5. Help

- **About:** Click "Help" menu and select "About" item. It represents the copyright information about software
- **Help:** Click "Help" menu and select "Online help" item. It will open the help manual. Before operating software, please read manual carefully.